

BACKGROUND

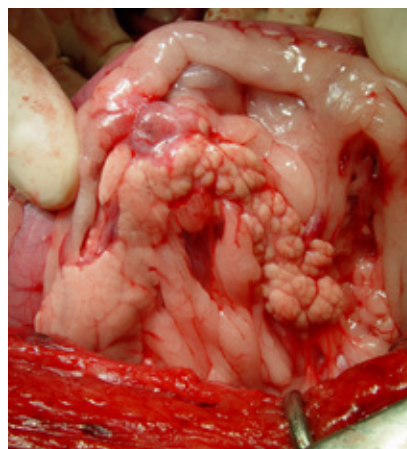
95%

Malignant in dogs



BLOODWORK

Low glucose -
 inappropriate insulin
 combination



WHIPPLE'S TRIAD

Signs of
 low glucose

Low glucose
 in blood



Reverse signs
 with glucose



CLINICAL SIGNS

- ▶ Seizures
- ▶ Weakness
- ▶ Collapse

DIAGNOSIS

Low cost

Ultrasound or surgery

Gold standard

Dual phase CT angiography

THERAPY

Surgery is considered the
 treatment of choice

Conservative Therapy

Feed multiple times a day
 Prednisolone 0,5-2 mg/kg PO 2dd
 Diazoxide 5-30 mg/kg PO 2dd
 Streptozotocin/Octreotide
 Toceranib 2.5-3 mg/kg MWF

STAGES & PROGNOSIS

Stage 1: >2 years *Only in pancreas*

Stage 2: 1-2 yrs *Pancreas & lymph nodes*

Stage 3: < 1 yr *Pancreas & distant*

